



SPEAKEASY BCN

Spanish Language School



LEARN SPANISH



IMMERSE IN THE CULTURE



MAKE FRIENDS

Barcelona.....	03
Why choose Speakeasy.....	04
Our Casa Program.....	06
Spanish Courses.....	08
Long Term Courses.....	12
Course duration per level.....	14
Student life.....	16
Accommodation.....	18



BCN

41.38°N, 2.18°E

BARCELONA IS THE PLACE TO LEARN!

Discover a whole new way to learn Spanish—immerse yourself in it! With Barcelona's sunny climate, mouth-watering cuisine, stunning beaches, world-renowned architecture, lively festivals, bustling markets, lush parks, and exciting nightlife, this city offers an unbeatable setting for language learning.

Imagine mastering Spanish not just in the classroom but in the heart of one of the world's most vibrant and culturally rich cities. This is why thousands of students from around the globe choose Barcelona each year, combining language study with an unforgettable experience of Spanish life.

This year, we invite you to be part of it. Join us in Barcelona for a Spanish adventure you'll never forget!

¡hasta pronto!

*¡hola!
bienvenidos a Barcelona*

WHY CHOOSE SPEAKEASY?

“Teaching Spanish is our passion and we’re committed to offering you high quality courses at reasonable prices. Moreover, we have a really vibrant student community here at Speakeasy, where you get much more than just a great education”

Soren Kohnke, Director

Here are some of the reasons why Speakeasy is Barcelona's leading Spanish school...



OUR COURSES

We offer more than 15 different high quality Spanish courses at Speakeasy. We have both morning, afternoon and evening courses to suit your personal needs and schedule.



ACCREDITED BY CERVANTES

Speakeasy Language School has the accreditation of the Cervantes Institute, a government agency responsible for promoting the study and the teaching of Spanish language and culture in the world.



COMMUNICATIVE IMMERSION APPROACH

We use a communicative and practical approach to learning Spanish. The objective of the vocabulary, grammar and pronunciation that you learn, is to be able to communicate in Spanish as quickly as possible in an effective way. We use an immersion method of teaching Spanish, which means that all the teaching and textbooks are all in Spanish.



SMALL GROUPS & INTERNATIONAL STUDENTS

We keep our groups small in order to keep class quality high and facilitate the learning process. Our students come from all over the world and there are usually 5 or 6 different nationalities in each class. The average age of our students is 27 years and you will usually find a range of ages in each class.



OUR TEACHERS

For Speakeasy Language School, the quality of our teaching is of utmost important to us. Our faculty consists solely of highly qualified native Spanish teachers with experience teaching Spanish to foreigners. We have an academic team comprising Spanish language or translation graduates with specific training in ELE (Spanish as a Foreign Language).



SCHOOL FACILITIES & SERVICES

- Modern classrooms with interactive digital boards
- Free wireless connection
- Library for borrowing books
- Weekly extra-curricular activities
- Accommodation assistance
- Visa application guidance
- Student card with great discounts
- Mobile app for students with personalized schedules, reservation information, attendance data, and documents



STUDENT LIFE

For us, it's important that our students are happy, both inside and outside the classroom. We have a vibrant student community here at Speakeasy with a variety of after school activities and trips every week, making it easy for you to make friends from around the world.



SCHOOL LOCATION

Speakeasy Spanish School is located in the very center of Barcelona, close to Plaza Catalunya and La Rambla, surrounded by shops and restaurants and fast access to 3 central Metro stations and over 25 bus lines.

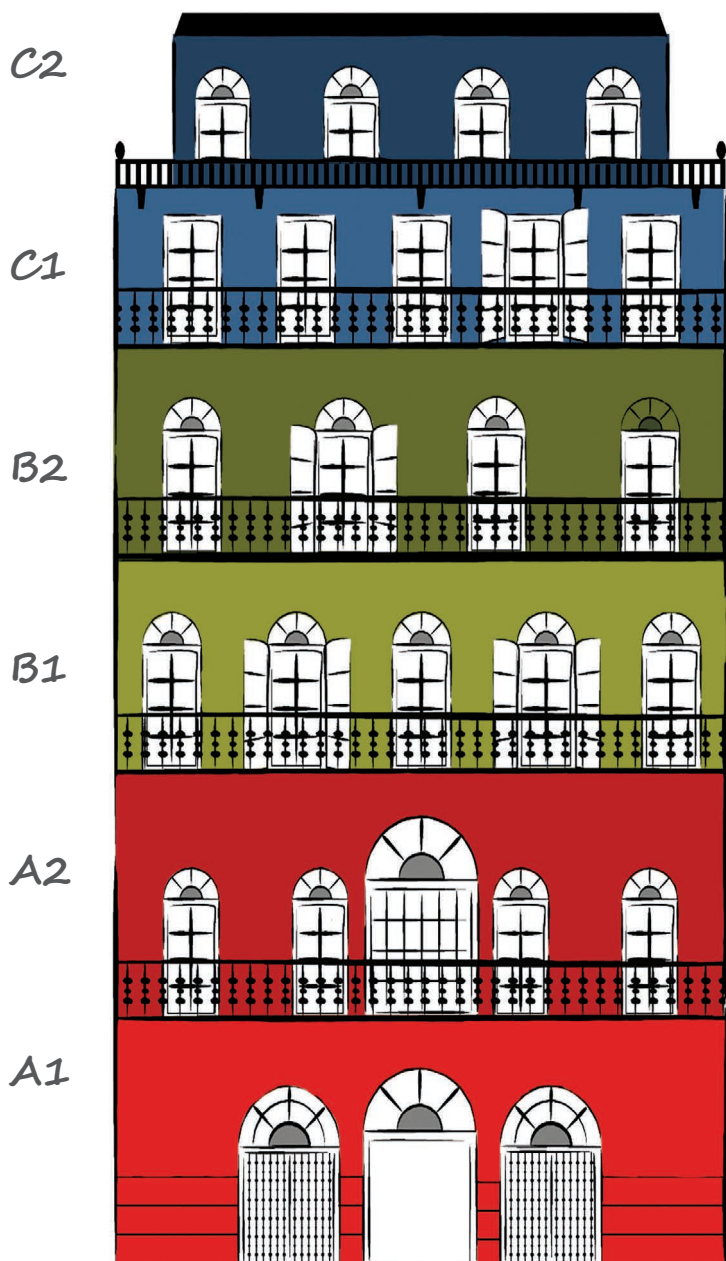
*¿Cómo se dice ...
en español?*

OUR CASA PROGRAM

Since 2001, Speakeasy has been helping students from around the world to learn Spanish with outstanding results thanks to the CASA program, our teaching method based on the Cervantes Institute curricular plan.

Let's imagine that learning Spanish is like building a house with many floors.

You can't build the next floor if the one below is not complete. That's why our CASA program is divided into 6 floors and organized into 13 courses. Each floor corresponds to the 6 levels of the *Common European*



Framework of Reference for Languages that help you build your Spanish language from beginner right through to advanced.

The Speakeasy teaching method is based on a modern immersion philosophy, which means that all teaching and textbooks are in Spanish. By studying with us you'll be encouraged to listen, speak, read and write only in the language that you're learning.

FLOOR 6. LEVEL C2 (C2.1 / C2.2)

Fantastic! You did it! You have a native level and now you are able to speak, understand or write at a professional level - the level of an expert.

FLOOR 5. LEVEL C1 (C1.1 / C1.2)

Excellent! At this point, you have acquired an extensive knowledge of Spanish. Now you will be able to speak about any topics, understand any audio, articles or conversation and be able to write any kind of text.

FLOOR 4. LEVEL B2 (B2.1 / B2.2)

Let's go! The 4th floor is a level of improvement. You will reinforce your knowledge and improve your comprehension and written expression. You will be able to speak much more fluently.

FLOOR 3. LEVEL B1 (B1.1 / B1.2 / B1.3)

Brilliant, you keep going up! We will speak about different themes such as stories, your CV, your travels etc. You will also increase your vocabulary and improve your general understanding. You will be able to use the past or future or the conditional tenses as well as start to learn "el subjuntivo".

FLOOR 2. LEVEL A2 (A2.1 / A2.2)

Very good! From now on, you will learn how to speak about your past and future plans. You will be able to interact in many social contexts or express your opinion on various topics.

FLOOR 1. LEVEL A1 (A1.1 / A1.2)

Let's go! You start with the basic, but you will quickly be able to use Spanish in everyday life through learning basic grammar and vocabulary.

Test your level for free at
www.speakeasybcn.com

¿hablas español?

OUR SPANISH COURSES

OUR MOST POPULAR COURSE

INTENSIVE SPANISH COURSE

This is our most popular course and is great for people who want to focus on learning Spanish and progress quickly.

20 hours a week (4 hours per day)

Schedule:

09.00 to 13.00 - Monday to Friday
(All times are subject to availability)

starts every week

**if you are a beginner you can start every 2nd week*

¿De donde eres?

SEMI-INTENSIVE SPANISH COURSE

This course is ideal for students who want to combine learning Spanish with other responsibilities while still making consistent Spanish language-learning progress.

10 hours a week (2 hours per day)

Schedule:

13.30 to 15.30 - Monday to Friday

17.30 to 19.30 - Monday to Friday

(All times are subject to availability)

starts every week

*if you are a beginner you can start every 4th week

EVENING SPANISH COURSE

This course is perfect for students who are working or studying during the day and would like to learn Spanish in the evening.

4 hours a week (2 hours per class)

Schedule:

18.00 to 20.00 - Monday & Wednesday or Tuesday &

Thursday

(All times are subject to availability)

*if you are a beginner you can start every 8th week

IMMERSIVE SPANISH COURSE

You'll study 10 hours of general Spanish each week, complemented by 10 hours of Spanish workshops. These immersion workshops offer practical activities that allow you to actively apply what you've learned in class.----

20 hours a week (4 hours per day)

Schedule:

13.30 to 15.30 or 17.30 - 19.30 group classes

and 15.30 - 17.30 Immersion workshops

Monday to Friday

(All times are subject to availability)

starts every week

*if you are a beginner you can start every 4th week

SUPER-INTENSIVE SPANISH COURSE

Make the most of your time! This course is great for students who want to learn as much Spanish as possible. You will study 6 hours every day including general Spanish, an hour of conversation class and an hour of Spanish workshops.

30 hours a week (6 hours per day)

Schedule:

09.00 to 13.00 and 15:30 to 17:30 - Monday to

Friday (all times are subject to availability)

starts every week

*if you are a beginner you can start every 2nd week

see more !



me llamo...

MORE COURSES

CONVERSATION CLASSES

These classes are designed for people who want to practice and improve their conversation skills further. You'll cover a range of exercises that will teach you how to express yourself with confidence. You need at least a B1 level to attend these classes.

Our Conversation classes can be booked independently or in addition to our Intensive or Semi-Intensive Spanish courses.

Schedule:

15:30 to 16:30 - Monday to Friday
(All times are subject to availability)

available from B1 level

CULTURE CLASSES

These classes will allow you to discover different cultural aspects of Spanish-speaking countries such as music, art, architecture, painting, literature, gastronomy, traditions and folklore. Thanks to this cultural knowledge, an essential component to deepen and master a language, our students practice and improve their command of Spanish in an active, entertaining and participatory way.

Our culture classes can be booked independently or as a complement to group or individual courses.

Schedule:

16:30 to 17:30 - Monday to Friday
(All times are subject to availability)

available from B1 level

PRIVATE SPANISH CLASSES

Our private Spanish lessons are designed for individuals, couples, friends and small groups with specific learning goals.

Your teacher will adapt the Spanish course to meet your requirements and build your Spanish level by level using our immersion teaching method.

*at Speakeasy,
at your home,
or online!*

DELE COURSE

DELE is the official accreditation recognised by the Ministry of Education in Spain.

Our DELE courses are designed to prepare you for the B2 level exam.

You'll cover everything you need to know to pass the exam, plus in depth techniques for achieving the best results.

Course duration:

2, 3, or 4 weeks

Schedule:

9:00 to 13:00 or 13.30 - 17.30 - Monday to Friday
(All times are subject to availability)

Please contact us for the DELE course start dates.

12H OR 24H COMBINATION

This course is great for students who want to have group lessons with the added benefit of combining them with private lessons.

With our combination Spanish course you have the best of both worlds. You get to enjoy the social aspect of studying in a group while still being able to focus on your specific learning needs.

Schedule:

13.30 to 15.30 or 17.30 to 19.30- Monday to Friday
+ 2 hours private lessons once a week (flexible schedule)

or

9:00 to 13:00 - Monday to Friday + 4 hours private lessons (flexible schedule)

20H OR 30H EXPRESS COURSE

This course is built around our CASA immersion program and based on private lessons.

With Express Spanish you'll get the one to one support you need to develop your Spanish language skills in the fastest time possible.

*if you have no
time to lose*

LONG-TERM SPANISH COURSES

¡Me gustas tu!

Our Long-term Spanish courses are a great option if you want to learn Spanish and enjoy living in Barcelona for a longer period of time. These courses meet the requirements to apply for a student visa in Spain.

Choose between accelerated and immersive programs depending on your preference of schedule and learning goals.

IMMERSIVE LONG-TERM COURSE

In our Long-term Immersive Spanish program, you'll study 10 hours of general Spanish each week and complement these with 10 hours of Spanish cultural activities and workshops. These immersion workshops offer practical activities that allow you to actively apply what you've learned in class, including interactive games, Spanish tutoring to review what you've learned in class, pronunciation, workshops about current events, popular culture, history and more! Each week you'll have a variety of topics to choose from.

General Spanish classes are held 2 hours each day, Monday through Friday, in the afternoon either from 13.30 – 15.30 or 17.30 – 19.30. Complimentary Spanish Immersion workshops are held from 15.30 – 17.30 each day. In your general Spanish classes, you will cover all aspects of Spanish language learning each day: speaking, reading, writing, and listening. Then, you'll have the opportunity to apply what you've learned beyond the books and classroom.

IMMERSIVE SCHEDULE

Monday through Friday

10h Spanish course from 13:30-15:30
or 17:30 - 19:30

Immersion workshop from 15:30 - 17:30

Course pack includes:

- 10h Semi-Intensive Spanish Course
- Daily Spanish immersion workshops
- Some weeks of holidays
- Books & registration fee
- Visa documents

COURSE PACKS

24 weeks

- 15 course weeks + 9 holiday weeks

30 weeks

- 20 course weeks + 10 holiday weeks

36 weeks

- 24 course weeks + 12 holiday weeks

48 weeks

- 30 course weeks + 18 holiday weeks

52 weeks

- 34 course weeks + 18 holiday weeks

ACCELERATED LONG-TERM COURSE

In our Long-term Accelerated Spanish program, you'll study 20 hours of Spanish each week and cover up to 6 levels of the CASA program. Classes are 4 hours each day, Monday through Friday, from 9:00 – 13:00. Class is divided into two blocks, one teacher for each half, with a small break in the middle. This gives you time to cover all aspects of Spanish language learning each day: speaking, reading, writing, and listening. You'll also have the option to include the DELE exam preparation course in packages from 36 weeks and more.

This program is intended for those who would like to take advantage of their time in Barcelona and fully commit to learning as much Spanish as possible. No other program delivers the same results or will increase your level of Spanish faster than the Accelerated Spanish program at Speakeasy.

ACCELERATED SCHEDULE

Monday through Friday
20h Spanish course from 9:00 - 13:00

Course pack includes:

- 20h Intensive Spanish Course
- DELE preparation course (36 weeks +)
- Some weeks of holidays
- Books & registration fee
- Visa documents

COURSE PACKS

24 weeks

- 22 course weeks + 2 holiday weeks

30 weeks

- 26 course weeks + 4 holiday weeks

36 weeks

- 30 course weeks + 6 holiday weeks

42 weeks

- 36 course weeks + 6 holiday weeks

48 weeks

- 40 course weeks + 8 holiday weeks

52 weeks

- 42 course weeks + 10 holiday weeks

ADDITIONAL SERVICES

VISA HELP

Speakeasy will help advise you on the visa application process, which can be quite complex and time consuming. We have years of experience helping non-EU citizens to obtain their long-term student visas.

You can take comfort in the fact that we will be there for you along the whole way.

*for more information
please contact us!*

BUILD YOUR SPANISH FLOOR BY FLOOR

Here you can see how each course proceeds and how long it takes to complete each level

BEGINNER

	A1.1	A1.2	A2.1	A2.2
30h/week Super Intensive	2 weeks	2 weeks	2 weeks	2 weeks
20h/week Intensive	2 weeks	2 weeks	2 weeks	2 weeks
10h/week Semi-Intensive	4 weeks	4 weeks	4 weeks	4 weeks
4h/week Evening Classes	8 weeks	8 weeks	8 weeks	8 weeks
24h/week Combined	2 weeks	2 weeks	2 weeks	2 weeks
12h/week Combined	4 weeks	4 weeks	4 weeks	4 weeks



INTERMEDIATE

ADVANCED

INTERMEDIATE			ADVANCED					
B1.1	B1.2	B1.3	B2.1	B2.2	C1.1	C1.2	C2.1	C2.2
2 weeks	2 weeks	2 weeks	12 weeks	12 weeks	12 weeks	12 weeks	12 weeks	12 weeks
2 weeks	2 weeks	2 weeks	12 weeks	12 weeks	12 weeks	12 weeks	12 weeks	12 weeks
4 weeks	4 weeks	4 weeks	24 weeks	24 weeks	24 weeks	24 weeks	24 weeks	24 weeks
8 weeks	8 weeks	8 weeks	30 weeks	30 weeks	30 weeks	30 weeks	30 weeks	30 weeks
2 weeks	2 weeks	2 weeks	12 weeks	12 weeks	12 weeks	12 weeks	12 weeks	12 weeks
4 weeks	4 weeks	4 weeks	24 weeks	24 weeks	24 weeks	24 weeks	24 weeks	24 weeks

OUR SPEAKEASY ACTIVITIES

*¡Vamos a
playa!*



At Speakeasy there is always something fun going on, inside and outside the classroom.

We offer several activities every week and we try to differentiate them as much as possible, mixing a bit of culture with fun and exciting activities, there is always something for everyone.

Examples of these activities include parties, bike tours, beach days, museums, wine tours, tapas, paella,

cooking classes, boat trips, Gaudi tours, weekend trips to Girona, Tarragona, Cadaques, Valencia, France, ski-trips to Andorra and much more!

Is there anything special you want to do or see in Barcelona? Just tell us and we will make sure you won't miss a thing.

Get ready to make lots of friends from around the world with Speakeasy Language School!



A woman with long brown hair is sitting on a black metal balcony chair. She is wearing a white button-down shirt, a dark patterned vest, black tights, and white sneakers. She is looking out a window with a view of a building. The scene is dimly lit, suggesting an evening or indoor setting.

¡Mi casa es tu casa!

ACCOMMODATION

YOUR HOME AWAY FROM HOME

Speakeasy is partnered with local accommodation providers in order to offer our students a variety of options. Most are located within 20 minutes from the school and the city center by public transport.

STUDENT RESIDENCE

In a student residence you'll have a private room with different bed and amenities options you can choose from. Bookings can include only accommodation, breakfast and dinner, or all meals in a residence cafeteria.

Also included are a variety of other student services such as a gym, study areas, rooftop terrace, media room, laundry room and more!

Minimum stay: 1 month

SHARED APARTMENT

A shared apartment means that you have your own room in a shared apartment with other students. As the minimum stay is 1 month, this option is more suited to our longer-term students. Normally you live with 1-2 other students. You will have your own room with a desk, closet, your own keys and access to all shared areas of the flat. Food is not included, but will have a shared kitchen to cook your own meals. All the apartments have a Wifi connection, linens, and cleaning service included.

Minimum stay: 1 month

PRIVATE APARTMENT

Having a private apartment means that you will have an entire centrally located apartment to yourself. Our partner offers a wide portfolio of private apartments with the highest standards. All of them fully furnished, equipped and nicely decorated.

Minimum stay: 1 month

LOCAL HOST

A local host is an excellent way to practice your Spanish and experience Spanish culture firsthand. You will have your own room with a desk and closet, and your own set of keys. The laundry and cleaning are included. You will have the option to include breakfast and dinner if you prefer. All the apartments have a Wifi connection and include linens.

Minimum stay: 1 week

*Your home away
from home!*

Address: Ronda Universitat 7,

08007 Barcelona

Metro: Universitat, Plaça

Catalunya, Passeig de Gràcia

E-mail: info@speakeasybcn.com

Tel: + 34 933 427 197

Opening Hours: Monday - Friday

8.30h - 18.30h



SPEAKEASY BCN

www.speakeasybcn.com

